



## *Introduces The **OK<sup>®</sup>-EX***

*-Total Tear Layer Control-*

### ***Features***

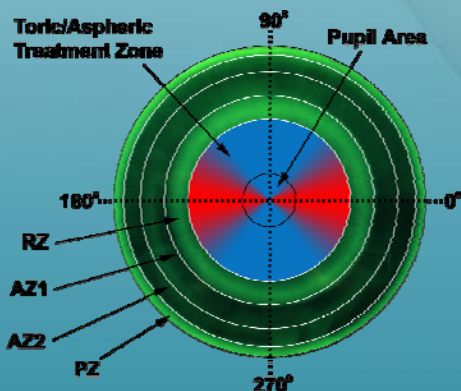
- ♦ Optimum Control and Results for High Myopia
- ♦ Hyperbolic Treatment Zones for Maximum Flattening
- ♦ Dual Aspheric Reverse and Alignment Zones for Improved Lens Centering
- ♦ Topographical / Empirical / Inventory / Diagnostic
- ♦ Multi-Axis Toric / Astigmatism Option

### ***What is the OK-EX?***

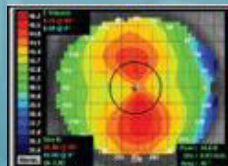
The Contex OK-EX design is the result of years of research and development. With the advent of myopia control and the desire to quickly reduce larger amounts of myopia, Contex set out to create a lens that would offer the advantages of a controlled tear layer in the reverse zone and the ability to reduce higher amounts of myopia quicker and with more control.

### ***Multi-Axis Toric Option***

- ♦ Unique Design Along Each Axis
- ♦ Toric Reverse and Alignment Zones
- ♦ Toric Treatment Zones



***Before***



***After***



*Contex OK-EX Promo US Rev-A 4-14-15*



4505 Van Nuys Blvd  
Sherman Oaks, CA 91403  
USA

Phone: 800-626-6839  
Fax: 818-788-5078  
Color Fax: 818-788-6108  
Email: [info@contexusa.com](mailto:info@contexusa.com)

[www.oklens.com](http://www.oklens.com)

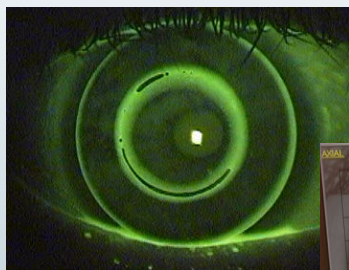
**Boston** AUTHORIZED  
MANUFACTURER



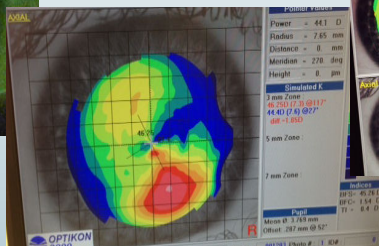
## Why is the OK-EX Different?

For years the standard optic zone for orthokeratology lenses has been 6.0mm. The OK-EX uses a variable optic zone diameter that is calculated to provide a consistent tear film depth at the edge of the optic zone. The higher the target power, the smaller the optic zone becomes. Hyper-Aspheric treatment zones create the ultimate flattening power. The OK-EX also features double aspheric reverse and alignment zones that help center the lens on even the most difficult corneas.

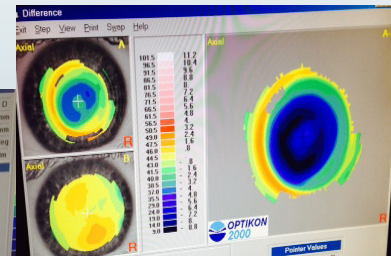
### Actual Patient



### Pre-Fit



### Post Wear Diff



## Easy E-System Nomenclature

Example: CK: **43.00**/44.00      Refraction: **-5.00**      Eccentricity Value = **.5**

OK® E-System Design Code: **43.00/-5.00 (.5EX)** / 9.06 / 10.6 / +1.00

### If the Lens Is Tight: Raise the e-value

OK E: 43.00/-5.00 **(.55EX)**      .05 loosens the fit by about 11 microns

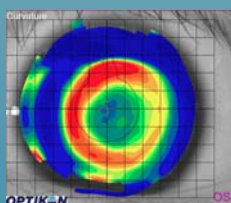
OK E: 43.00/-5.00 **(.6EX)**      .1 loosens the fit by about 22 microns

### If the Lens Is Loose: Lower the e-value

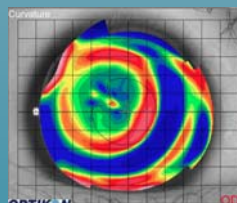
OK E: 43.00/-5.00 **(.45EX)**      .05 tightens the fit by about 11 microns

OK E: 43.00/-5.00 **(.4EX)**      .1 tightens the fit by about 22 microns

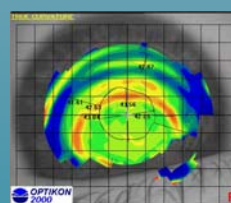
### Desired Map:



### Tight Map:



### Loose Map:



4505 Van Nuys Blvd  
Sherman Oaks, CA 91403  
USA

Phone: 800-626-6839  
Fax: 818-788-5078  
Color Fax: 818-788-6108  
Email: [info@contexusa.com](mailto:info@contexusa.com)

[www.oklens.com](http://www.oklens.com)

**Boston** AUTHORIZED  
MANUFACTURER